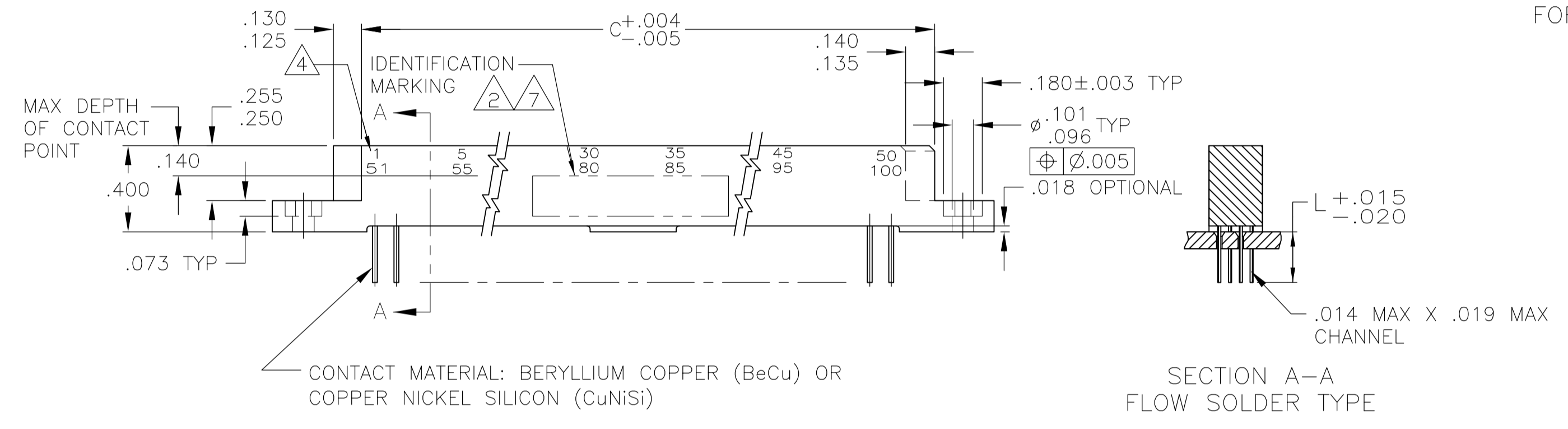
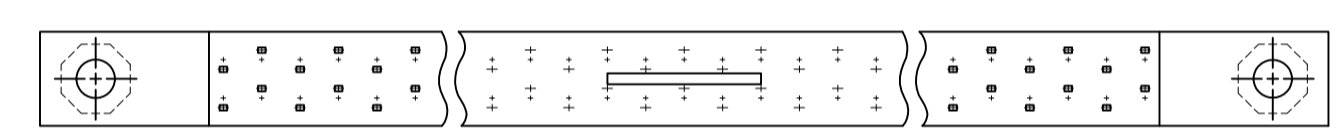


RECOMMENDED PRINTED CIRCUIT BOARD LAYOUT
 (CONNECTOR SIDE)
 FOR -1 THRU -2--3, 2--5, AND 2--6

RECOMMENDED PRINTED CIRCUIT BOARD LAYOUT
 (CONNECTOR SIDE)
 FOR 2-530340-4 ONLY



SECTION A-A
 FLOW SOLDER TYPE



REMARKS	L	IDENTIFICATION MARKING	CONTACT IDENT NO.	DIMENSIONS					NO OF POSN	ASSEMBLY NUMBER			
				E	D	C	B	A					
OBSOLETE	Ø.005	Ø.005	Ø.005	.235	-	1 - 30 31 - 60	2.900	29	3.165	3.565	3.855	60	2-530340-7
	Ø.005	Ø.005	Ø.005	.235	-	1 - 55 56 - 110	5.400	54	5.665	6.065	6.355	110	2-530340-6
	Ø.005	Ø.005	Ø.005	.235	-	1 - 20 21 - 40	1.900	19	2.165	2.565	2.855	40	2-530340-5
OBSOLETE	Ø.005	Ø.005	Ø.005	.156	-	1 - 55 56 - 110	5.400	54	5.665	6.065	6.355	110	2-530340-4
	Ø.005	Ø.005	Ø.005	.235	Ø.005	1 - 55 56 - 110	5.400	54	5.665	6.065	6.355	110	2-530340-3
	Ø.005	Ø.005	Ø.005	.156	M55302/27-193	1 - 70 71 - 140	6.900	69	7.165	7.565	7.855	140	2-530340-2
	Ø.005	Ø.005	Ø.005	.156	M55302/27-192	1 - 67 68 - 134	6.600	66	6.865	7.265	7.555	134	2-530340-1
	Ø.005	Ø.005	Ø.005	.156	M55302/27-191	1 - 65 66 - 130	6.400	64	6.665	7.065	7.355	130	2-530340-0
	Ø.005	Ø.005	Ø.005	.156	M55302/27-190	1 - 60 61 - 120	5.900	59	6.165	6.565	6.855	120	1-530340-9
	Ø.005	Ø.005	Ø.005	.235	-	1 - 55 56 - 110	5.400	54	5.665	6.065	6.355	110	1-530340-8
OBSOLETE	Ø.005	Ø.005	Ø.005	.235	-	1 - 50 51 - 100	4.900	49	5.165	5.565	5.855	100	1-530340-7
OBSOLETE	Ø.005	Ø.005	Ø.005	.235	-	1 - 45 46 - 90	4.400	44	4.665	5.065	5.355	90	1-530340-6
	Ø.005	Ø.005	Ø.005	.235	-	1 - 40 41 - 80	3.900	39	4.165	4.565	4.855	80	1-530340-5
OBSOLETE	Ø.005	Ø.005	Ø.005	.235	-	1 - 35 36 - 70	3.400	34	3.665	4.065	4.355	70	1-530340-4
	Ø.005	Ø.005	Ø.005	.235	-	1 - 30 31 - 60	2.900	29	3.165	3.565	3.855	60	1-530340-3
OBSOLETE	Ø.005	Ø.005	Ø.005	.235	-	1 - 25 26 - 50	2.400	24	2.665	3.065	3.355	50	1-530340-2
	Ø.005	Ø.005	Ø.005	.235	-	1 - 20 21 - 40	1.900	19	2.165	2.565	2.855	40	1-530340-1
	Ø.005	Ø.005	Ø.005	.235	-	1 - 15 16 - 30	1.400	14	1.665	2.065	2.355	30	1-530340-0
	Ø.005	Ø.005	Ø.005	.156	M55302/27-99	1 - 55 56 - 110	5.400	54	5.665	6.065	6.355	110	530340-9
	Ø.005	Ø.005	Ø.005	.156	M55302/27-98	1 - 50 51 - 100	4.900	49	5.165	5.565	5.855	100	530340-8
	Ø.005	Ø.005	Ø.005	.156	M55302/27-97	1 - 45 46 - 90	4.400	44	4.665	5.065	5.355	90	530340-7
	Ø.005	Ø.005	Ø.005	.156	M55302/27-96	1 - 40 41 - 80	3.900	39	4.165	4.565	4.855	80	530340-6
	Ø.005	Ø.005	Ø.005	.156	M55302/27-95	1 - 35 36 - 70	3.400	34	3.665	4.065	4.355	70	530340-5
	Ø.005	Ø.005	Ø.005	.156	M55302/27-94	1 - 30 31 - 60	2.900	29	3.165	3.565	3.855	60	530340-4
	Ø.005	Ø.005	Ø.005	.156	M55302/27-93	1 - 25 26 - 50	2.400	24	2.665	3.065	3.355	50	530340-3
	Ø.005	Ø.005	Ø.005	.156	M55302/27-92	1 - 20 21 - 40	1.900	19	2.165	2.565	2.855	40	530340-2
	Ø.005	Ø.005	Ø.005	.156	M55302/27-91	1 - 15 16 - 30	1.400	14	1.665	2.065	2.355	30	530340-1

- 1 NUMBERS (SEE TABLE) AND LINES INDICATING EVERY FIVE CAVITIES MARKED ON MATING FACE.
- 2 IDENTIFICATION MARKING PER MIL-C-55302 (SEE TABLE)
- 3. MUST MEET ALL APPLICABLE REQUIREMENTS OF MIL-C-55302
- 4 NUMBERS INDICATING EVERY FIVE CAVITIES MARKED ON SIDE
- 5 KEY POSITION IDENTIFICATIONS MOLDED ON SURFACES SHOWN
- 6. USE EXTERNAL KEY NO 530341-1, MATES WITH P/N 530339
- 7 ADDITIONAL STAMPING PC 78620-1
- 8 CONTACT FINISH: .000050 GOLD IN CONTACT AREA, .000100 TIN-LEAD ON SOLDER TAILS, ALL OVER .000030-.000150 NICKEL.

THIS DRAWING IS A CONTROLLED DOCUMENT.

DIMENSIONS: INCHES	TOLERANCES UNLESS OTHERWISE SPECIFIED:	DIN C.C.THOMAS 2-26-91	Tyco Electronics Corporation Harrisburg, PA 17105-3608
0 PLC ± -	1 PLC ± -	11-14-91	
2 PLC ± -	3 PLC ± -	APVD G.GRIFFITH	RCPT ASSY, 1000 SERIES BOX, EXTERNAL KEYING WITH GASKET
4 PLC ± -	ANGLES ± -	NAME G.GRIFFITH	
MATERIAL DIALYL PHTHALATE	FINISH -	SIZE A1	RESTRICTED TO
CUSTOMER DRAWING		SCALE 2:1	SHEET 1 OF 1